



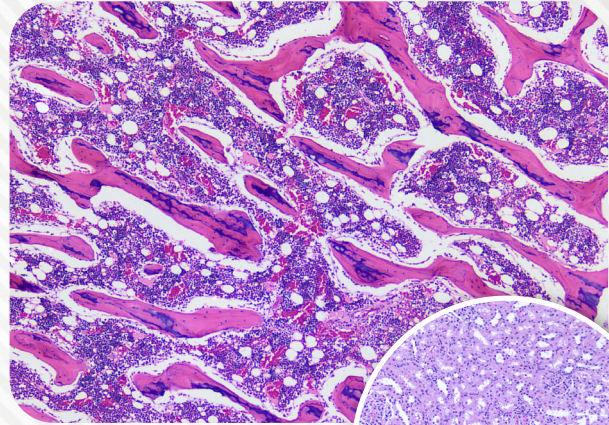
ACCU-SCOPE®

MICROSCOPY & IMAGING SOLUTIONS

EXC-250 SERIES
Clinical Microscope

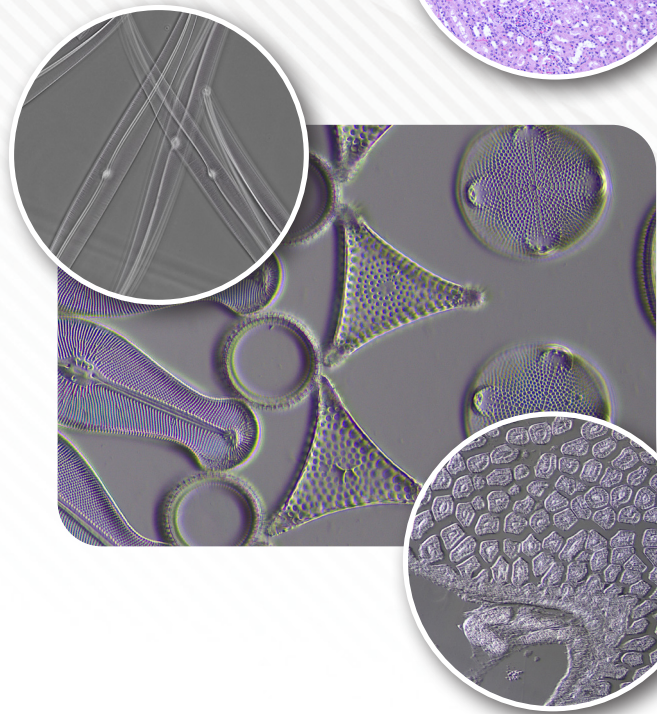
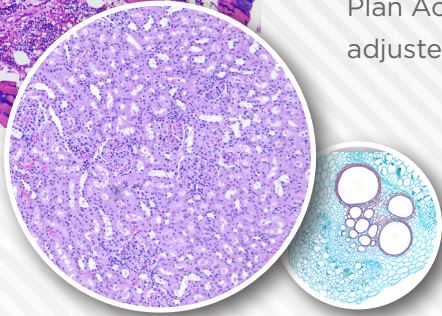


Empowering Discovery. Advancing Results.



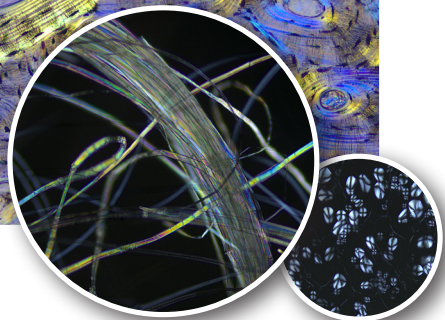
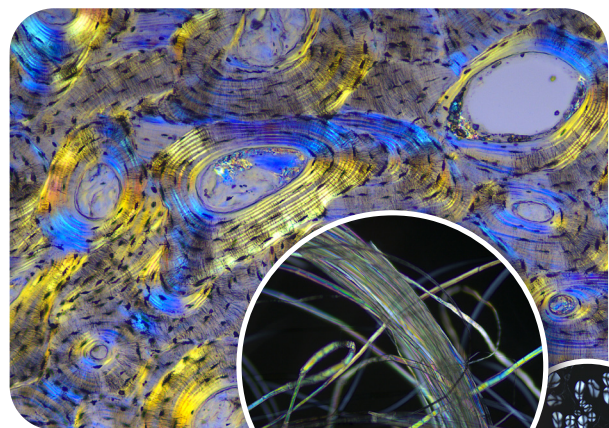
Brightfield Observation

The EXC-250 series delivers brilliant and crisp brightfield images thanks to its Abbe condenser, 5W color-balanced LED illumination, and standard Plan Achromat objectives. Contrast can be easily adjusted using the condenser iris diaphragm.



Phase Contrast

Phase contrast observation is available for 10x, 20x, 40x, and 100x objective magnifications. Pre-centered phase contrast annuli (10x/40x and 20x/100x) are mounted in sliders that slide easily into the slot in the Abbe condenser.



Simple Polarization

Easily add simple polarization to your EXC-250 series microscope. Place the rotatable polarizer on top of the LED illumination housing. The analyzer sets in the top of the microscope body below the viewing head. Rotate the polarizer until the field is black, then enjoy the colors! A gout polarizer is also available.





Choose Your Model



EXC-250



EXC-250-HD



EXC-250-HDS



EXC-250-SPH



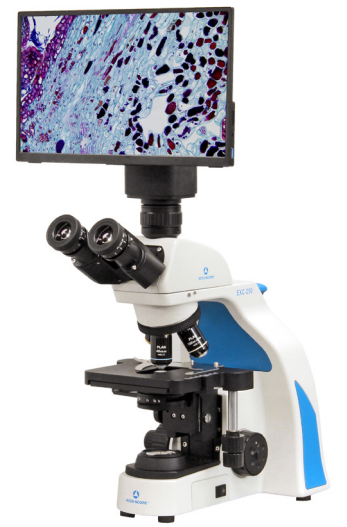
EXC-250-HDL



EXC-250-HDLS



EXC-250-4K



EXC-250-4KS



Carry Handle

Cord Wrap/Storage

◀ The EXC-250 features an integrated carry handle and cord wrap for easy storage and safe transport.

▼ Never lose power! The EXC-250 features a 5V/1A USB charging port on the back of the microscope.



Charging Port

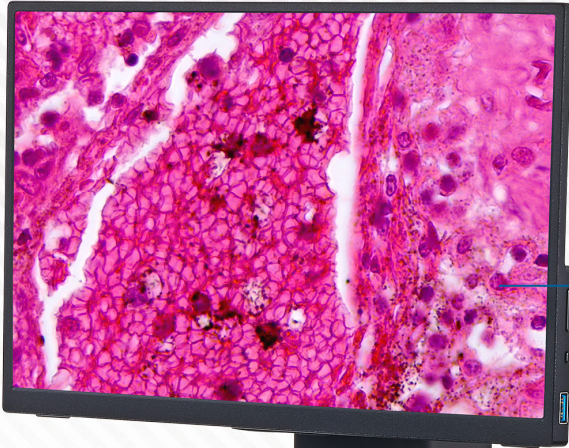
The EXC-250 is available as trinocular models.

Or, choose from one of our six pre-configured trinocular models with an included *Excelis™* HD camera and c-mount, or with the additional 13.3" HD monitor for a complete digital system.

EXC-250:

Dependable Routine Clinical Microscope

The ACCU-SCOPE® EXC-250 Microscope Series delivers excellent optical performance, value and resolution to meet the exacting standards of life science professionals and students. With a best-in-class 20mm field of view and super-bright LED illumination, the EXC-250 Series produces high contrast images with outstanding resolution. All models accept digital cameras for documentation, instruction and even greater ergonomics.



Optional cameras and monitor

PL10x/20mm focusing eyepieces

Standard trinocular port

Quadruple nosepiece

Plan achromat objectives

Rackless XY stage

Abbe condenser with slider slot

Variable 5W LED illumination

Carry handle (rear)

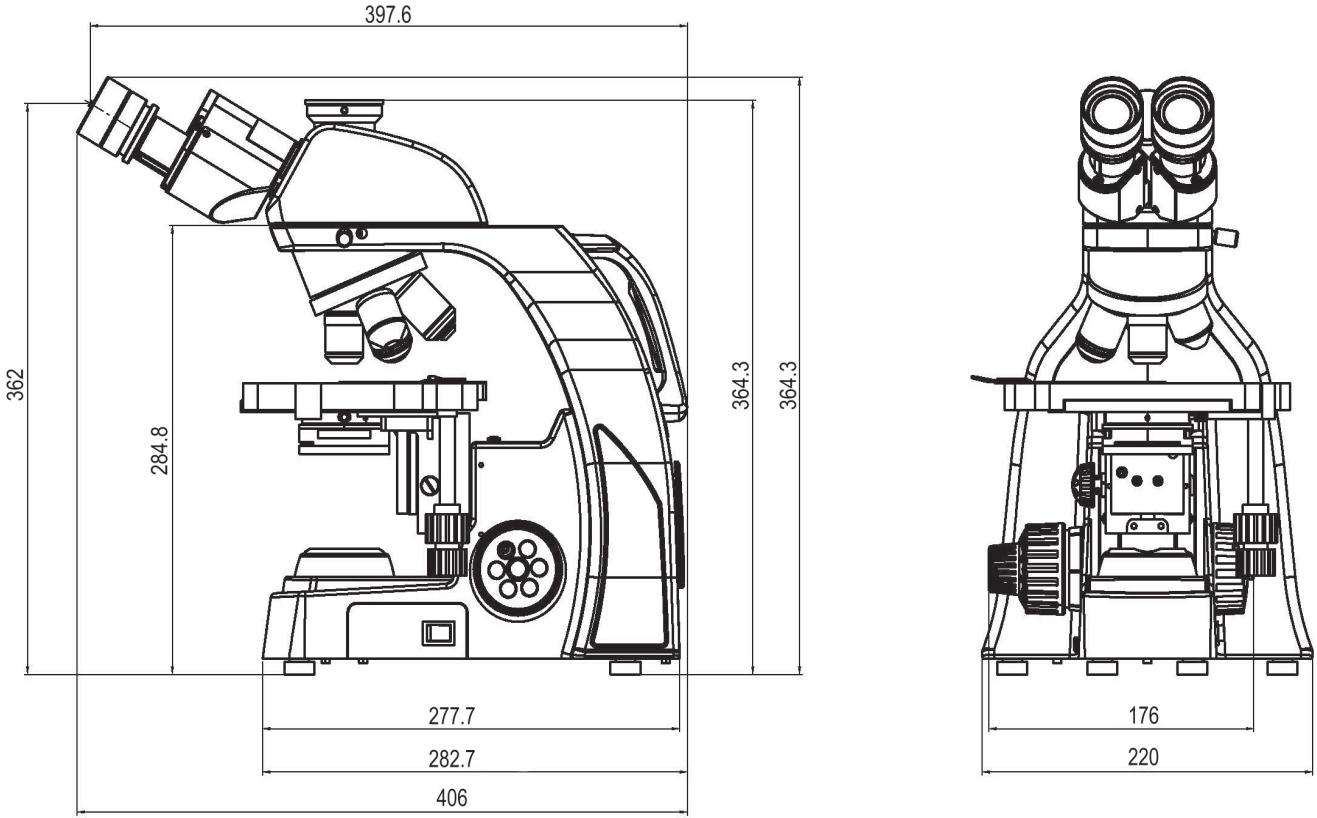
Cord wrap/storage (rear)

USB charging port (rear)

Coaxial course/fine focus controls



Dimensional Diagram (in mm)



EXC-250 Clinical Microscope

SPECIFICATIONS	
Viewing Head	Trinocular (fixed 50:50 light split) Siedentopf type viewing head, inclined 30°; rotatable 360°; interpupillary distance adjustment 50-75mm
Optical System	Infinity optical system, f = 180mm, anti-mold
Objectives	Plan Achromat 2x, 4x, 10x, 20x, 40xR*, 50xR* oil, 60xR*, 100xR* water, 100xR* oil; Plan Phase 10x, 20x, 40xR*, 100xR* oil <i>*Spring-loaded</i>
Eyepieces	HWF PL 10x/20mm eyepieces w/diopter, accepts 20.5mm reticle; optional eyepieces include HWF10x/18mm, HWF10x/20mm (no diopter)
Nosepiece	Rear facing quadruple, ball bearing nosepiece with positive click stops to ensure parcentration; optional quintuple nosepiece
Focusing System	Coaxial focusing system with adjustable tension control and upper limit stop to prevent accidental damage to slides; all metal gears, brass for fine focus gear
Stand	Cast aluminum alloy
Stage	Stage size 140mm x 132mm with X-Y movement range of 76mm x 50mm
Condenser	Abbe condenser NA 1.25, iris diaphragm, slot for sliders
Illumination	5 watt LED with variable intensity control; LED bulb is rated for over 25,000 hours of continued use; universal power supply 110-240v
Accessories	Dust cover, instruction manual included
Optional Accessories	Slider phase contrast set; darkfield slider (4x – 40x); simple polarizer/analyzer; gout kit; reticles; heated stage; cameras and adapters; microscope carry case
Warranty	5 year limited warranty for parts, labor, and electronic components; 1 year warranty on LED bulb



Copyright © 2026 ACCU-SCOPE Inc. All rights reserved. Printed in the U.S.A.
ACCU-SCOPE Inc. reserves the right to change and improve specifications
without notice due to technological or manufacturing advances.



v010526