

# Excelis 4K

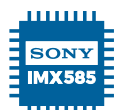
## UHD MICROSCOPY CAMERA

The high performance 4K camera delivers full UHD images with exceptional color and resolution. **CaptaVision+** imaging software adds advanced acquisition, image processing, measurement, report generation, plus more!

The AU-800-4KS version includes a 13.3" monitor that can be mounted directly to the camera allowing easy use of the camera's built-in software with heads-up viewing, and space-saving design.



## Key Features



## Recommended Applications

### CLINICAL/CELL BIOLOGY

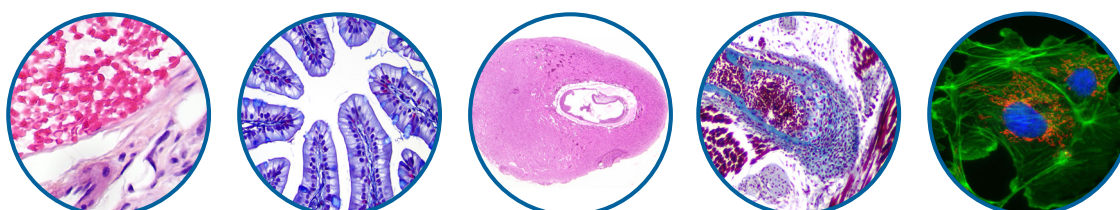
- Pathology
- Histology
- Microbiology
- Hematology

### EDUCATION

- Dissection
- Instruction
- Demonstration
- Training

### INDUSTRIAL

- Inspection
- Documentation
- Measurement



***Empowering Discovery. Advancing Results.***

# Excelis 4K

UHD MICROSCOPY CAMERA

## Key CaptaVision+ Software Features

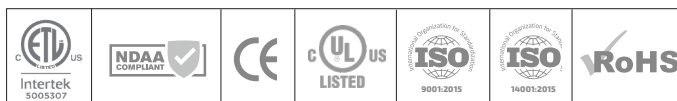
- Intuitive & customizable user interface
- Simple calibration and measurements
- Advanced control of exposure, gain, color balance, etc.
- Powerful image processing tools
- Intelligent flat field correction
- Record video with voice
- JPG, TIFF, PNG, DICOM image types
- Flexible report generation and data export
- Voice recording with video



CAMERA & SOFTWARE SPECIFICATIONS	
Model	AU-800-4K (camera only) AU-800-4KS (camera & monitor)
Sensor	Sony IMX585, CMOS, color
Sensor Size	13.33mm (1/1.2"), 0.65x C-mount recommended
Resolution	8MP; 3840 (H) x 2160 (V)
Pixel Size	2.9µm x 2.9µm
Frame Rate	HDMI: 30fps @ 3840x2160 USB 3.0: 30fps @ 3840 x 2160 GigE (Ethernet): 30fps @ 3840 x 2160
Image Capture	8MP / 4GB USB 3.0 memory stick (included)
Exposure Time	0ms - 1sec
White Balance	Auto / manual
Settings	Gain, gamma, saturation
Data Interface	USB 2.0 (mouse), USB 3.0, HDMI, GigE (Ethernet)
PC and Mac Imaging Software	CaptaVision+ Imaging Software for PC and Mac OS <b>Advanced Camera Controls:</b> live/still image measurement and annotation; scale bar, flat field correction; extended depth of focus (focus stacking); image stitching; HDR (high dynamic range) function <b>Image Types:</b> JPG, PNG, TIF & DICOM TWAIN driver available
System Software Compatibility	Windows 7, 8, 10 & 11 (64-bit recommended) Mac OSX 10.4 and higher <b>System Recommendations:</b> intel i5 or better (Quad Core or better); 16GB RAM or more; USB 2.0 high-speed port minimum (USB 3.0 recommended)
Power/Weight	2.4W / 505g
MONITOR SPECIFICATIONS	
Monitor (optional)	Mountable 13.3" Monitor
Input Modes	AC power, HDMI



Copyright © 2025 ACCU-SCOPE Inc. All rights reserved. Printed in the U.S.A.  
ACCU-SCOPE Inc. reserves the right to change and improve specifications without notice due to technological or manufacturing advances.



v051525