

EXC-500 Series

Laboratory Microscope



ACCU-SCOPE®

MICROSCOPY & IMAGING SOLUTIONS



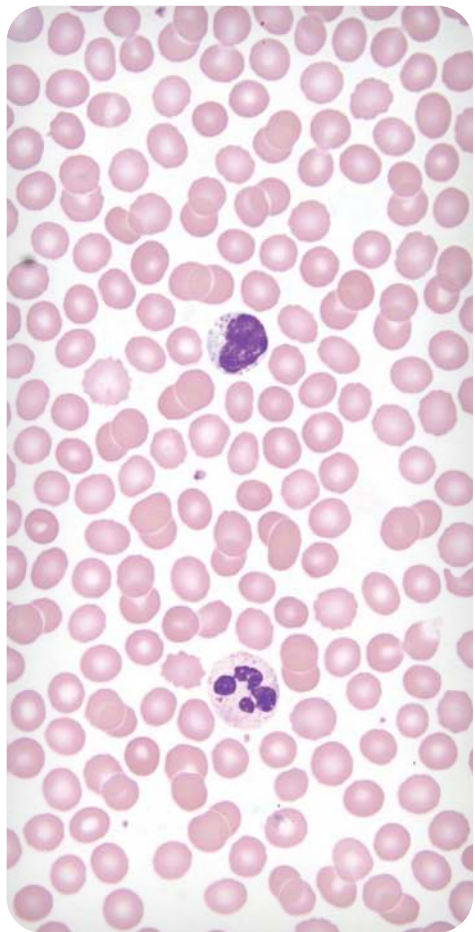
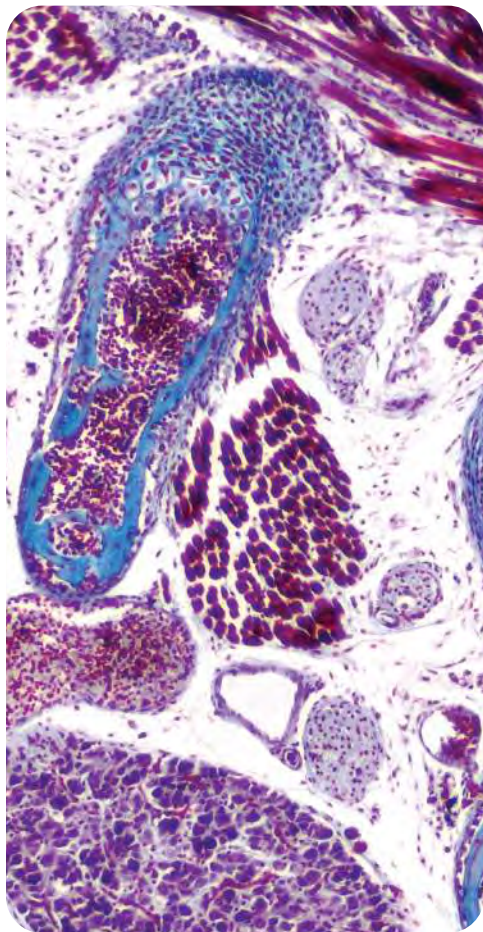
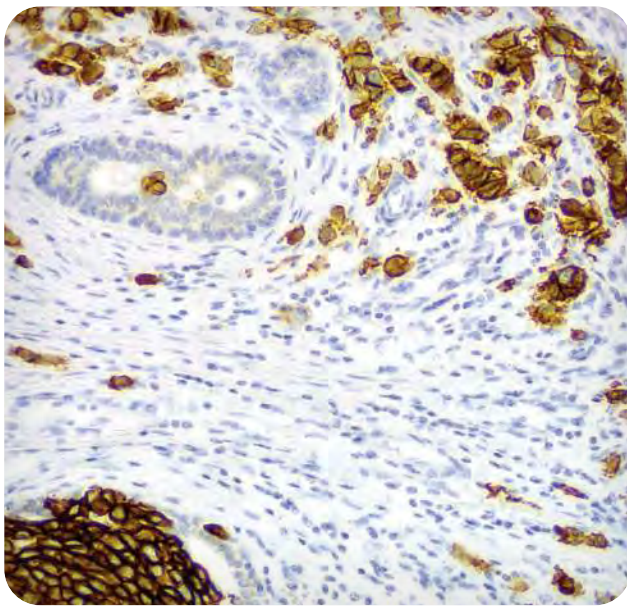
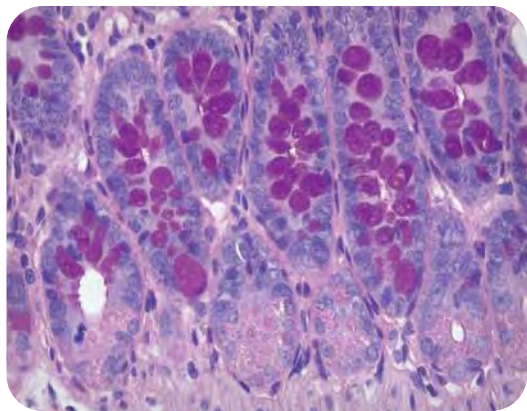
Empowering Discovery. Advancing Results.

Next Generation Microscopy and Imaging Solutions

The Preferred Laboratory Microscope Platform

As a market leader in quality microscopy and imaging solutions, ACCU-SCOPE blends precision, performance and outstanding value like no other manufacturer can. We deliver superb yet affordable optical instrumentation and microscopy innovations that help advance the work, improve the outcomes and empower the achievements of the demanding professionals we're privileged to serve. No matter your industry, discipline or individual endeavor, count on ACCU-SCOPE microscopy, imaging solutions and accessories to exceed expectation as you achieve your goals.





Tremendous Flexibility and Modularity



Fixed and ergonomic binocular and trinocular viewing heads available



6-position ball-bearing nosepiece with analyzer slot



Optional fluorescence and multi-viewing accessories available



Ultra-smooth black or white stage; special flat pathology stage



Polarizer and analyzer options for polarized light, Gout and DIC



Ergonomic low-positioned controls for stage, focus, intensity and field diaphragm



Wide variety of brightfield, darkfield, DIC, and phase contrast condensers available



3W LED illumination with Light Intensity Memory (LIM) and Color Temperature adjustment



Front LCD display with ECO sleep timer



Motorized EXC-500 Microscope System

The EXC-500-MOT delivers the convenience of motorized focus and a motorized objective nosepiece to the EXC-500 – a motorized stage is optional. The EXC-500-MOT operates as a traditional microscope with the added convenience of push-button objective selection from the front LCD screen, light intensity management and auto-escape for easy stage access when changing slides.

Intelligent LCD Display

The programmable LCD display of the EXC-500-MOT gives you instantaneous status on the objective position, focus position, illumination intensity, and more. Change objectives just by touching an icon. Automatic focus compensation ensures your sample is in focus with every objective change. Z-limits eliminate crashing objectives into slides. The EXC-500-MOT intelligently manages light intensity between objectives.

HOT Buttons

Hot buttons are conveniently located near the focus controls and allow fast changing of objectives and focus sensitivity without removing your eyes from the microscope. Adjust the focusing speed. Quickly change objectives. Press the ESC button to lower the stage for easy specimen loading or addition of immersion oil.

Motorized Stage

The EXC-500's optional motorized stage features traditional stage stalks for a true, drive-by-wire experience during sample movement. Coupled with our RC500 remote pathology software, the motorized stage allows a remote user to reposition the specimen.

RC500 Remote Collaboration System

The RC500 is a complete telepathology system including EXC-500 motorized microscope, high-resolution camera and software. The RC500 remote pathology software enables seamless automation and scanning, whether the user is sitting at the microscope or located remotely. The remote user has full control to select the objective, move the stage, adjust the light intensity, capture, annotate, and measure images. The RC500 remote collaboration system requires a Windows PC, and remote functionality requires a network connection and remote desktop software.



*RC500 Remote
Collaboration System*

Customize Your EXC-500



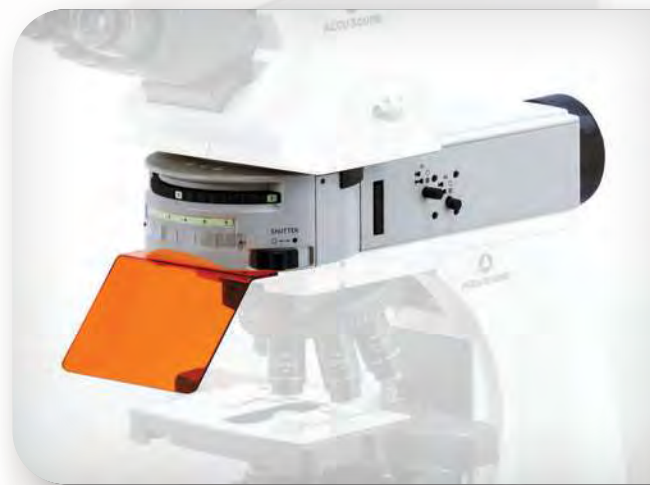
Precision Stages

Position your samples with your option of black or white 3-plate stages (right or left-handed), a special flat pathology stage or a motorized stage.



Brilliant Optics

With objectives from 2X to 100X oil immersion, you choose the best optics for your application.



Fluorescence Illumination

Add a fluorescence solution with 1, 2 or 3 channel integrated LEDs or a 6-position filter turret accepting today's LED and solid state light sources.



Contrast Methods

Expand the capability of your EXC-500 with optional contrast methods. Options include phase contrast, darkfield, DIC and polarized light (e.g., Gout analysis), observation. Brightfield is a standard configuration.



Cameras & Imaging

Add a camera for documentation, consultation or training. Choose a trinocular viewing head or the video port intermediate accessory for camera attachment.



Extended Ergonomics

Maximize comfort and performance with ergonomic viewing heads. Reduce shoulder strain with nosepiece spacers.

Multi-Observer Solutions

The EXC-500 can support multiple observers from 2 to 10. Add a camera to extend sharing and instruction capabilities beyond the microscope.



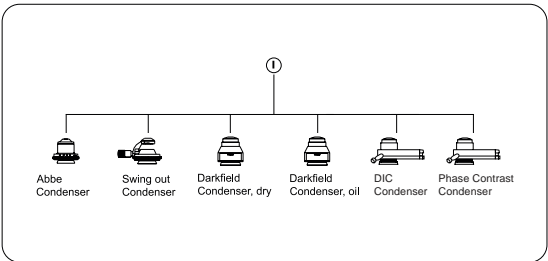
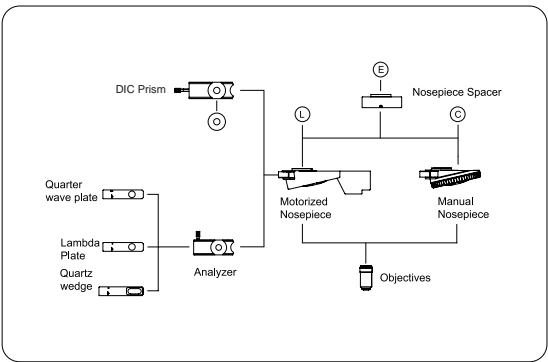
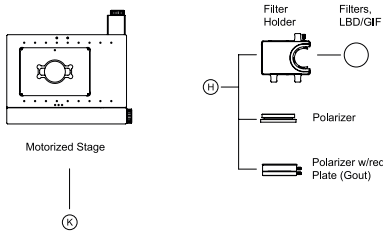
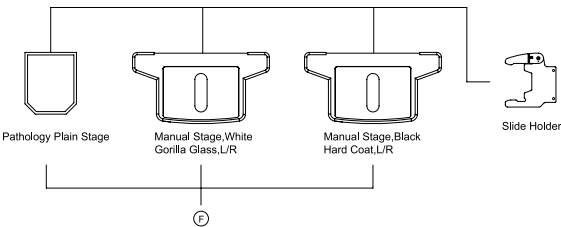
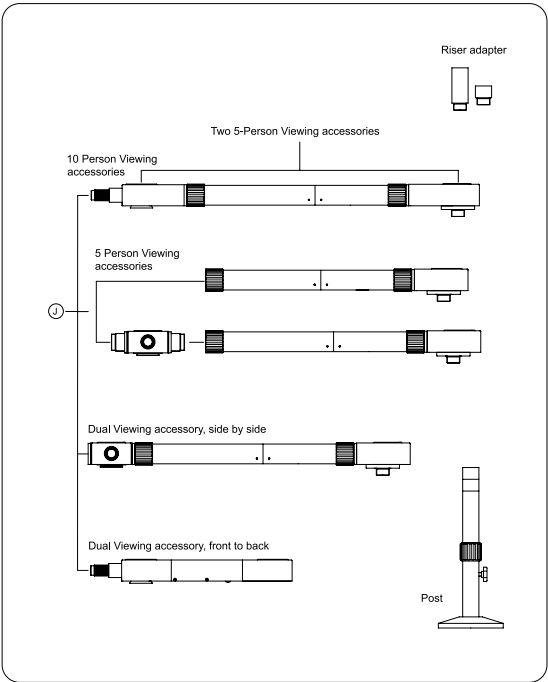
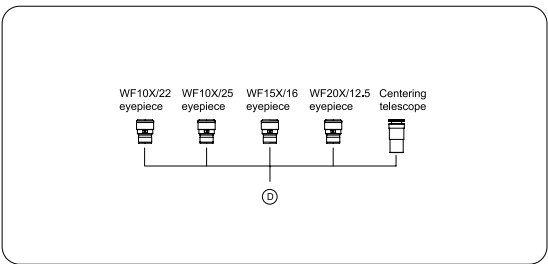
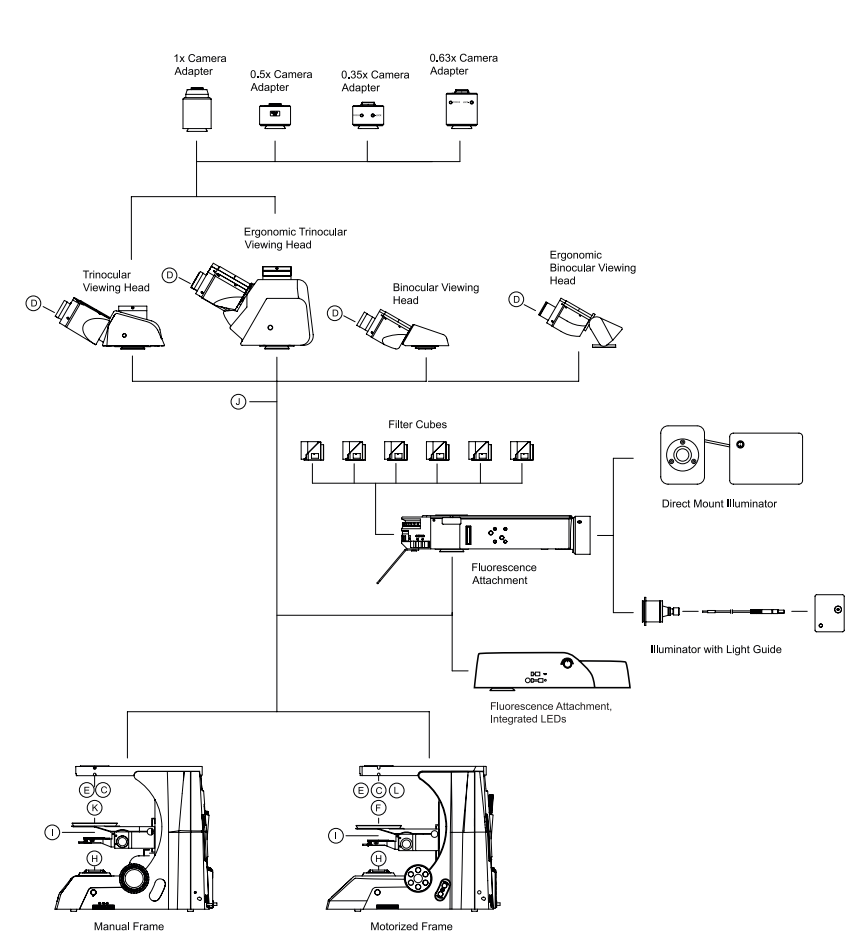
Objectives



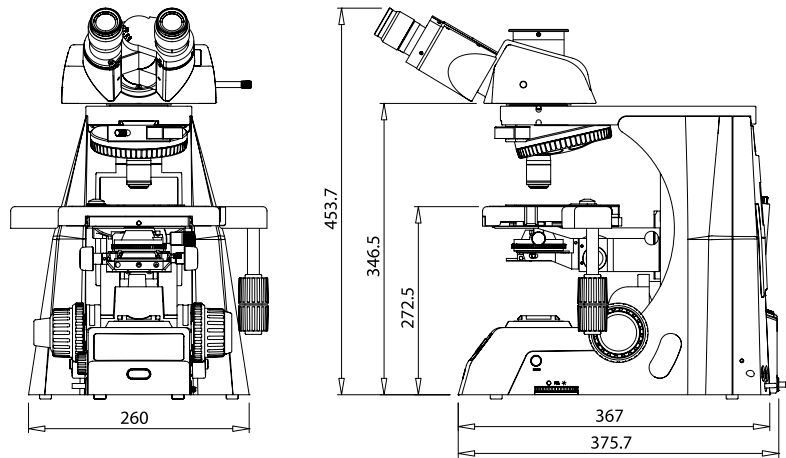
The key to quality images is the optics. ACCU-SCOPE offers a wide range of objectives to meet the performance requirements of many contrast methods.

| | NA | WD (mm) | Immersion | Cover Glass Thickness (mm) | Iris | Spring Loaded | Brightfield | Fluorescence | Darkfield | Phase Contrast | DIC |
|-----------------|-----------|---------|-----------|----------------------------|------|---------------|-------------|--------------|-----------|----------------|-----|
| 2x PLAN | 0.06 | 7.5 | | — | | | ● | ● | | | |
| 4x PLAN | 0.10 | 30.0 | | — | | | ● | ● | ● | | |
| 10x PLAN | 0.25 | 10.2 | | — | | | ● | ● | ● | | ● |
| 20x PLAN | 0.40 | 12.0 | | 0.17 | | | ● | ● | ● | | ● |
| 40x PLAN | 0.65 | 0.70 | | 0.17 | | ● | ● | ● | ● | | ● |
| 50x PLAN | 0.95 | 0.19 | Oil | 0.17 | | ● | ● | ● | | | |
| 60x PLAN | 0.80 | 0.30 | | 0.17 | | ● | ● | ● | ● | | |
| 100x PLAN | 1.25 | 0.20 | Oil | 0.17 | | ● | ● | ● | | | ● |
| 100x PLAN | 0.50-1.25 | 0.20 | Oil | 0.17 | ● | | ● | ● | ● | | ● |
| 10x PLAN PH | 0.25 | 10.2 | | — | | | ● | ● | | ● | |
| 20x PLAN PH | 0.40 | 12.0 | | 0.17 | | | ● | ● | | ● | |
| 40x PLAN PH | 0.65 | 0.70 | | 0.17 | | ● | ● | ● | | ● | |
| 100x PLAN PH | 1.25 | 0.20 | Oil | 0.17 | | ● | ● | ● | | ● | |
| 4x PLAN S-APO | 0.13 | 16.5 | | — | | | ● | ● | ● | | |
| 10x PLAN S-APO | 0.30 | 8.1 | | — | | | ● | ● | ● | | ● |
| 20x PLAN S-APO | 0.60 | 2.10 | | 0.17 | | | ● | ● | ● | | ● |
| 40x PLAN S-APO | 0.75 | 0.70 | | 0.17 | | ● | ● | ● | ● | | ● |
| 100x PLAN S-APO | 1.30 | 0.15 | Oil | 0.17 | | ● | ● | ● | | | ● |
| 10x APO | 0.45 | 4.0 | | — | | | ● | ● | | | ● |
| 20x APO | 0.75 | 1.1 | | 0.17 | | | ● | ● | | | ● |
| 40x APO | 0.95 | 0.21 | | 0.11-0.23 | | | ● | ● | | | ● |
| 60x APO | 1.40 | 0.25 | Oil | 0.17 | | ● | ● | ● | | | |
| 100x APO | 1.45 | 0.13 | Oil | 0.17 | | ● | ● | ● | | | ● |

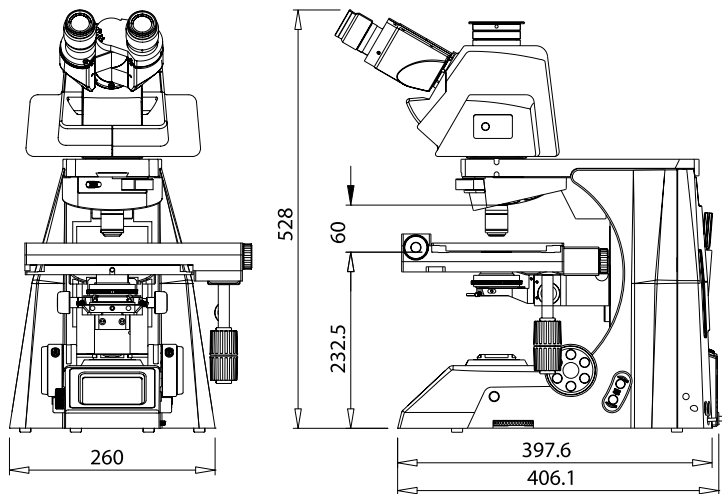
EXC-500 System Diagram



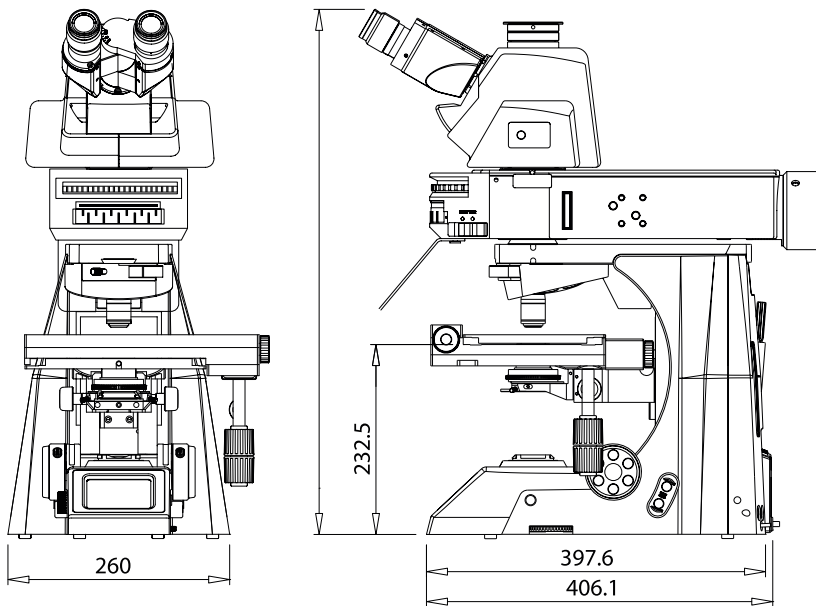
EXC-500 Dimensional Drawing



Configured with Ergonomic Trinocular Tube



Configured with Ergonomic Trinocular Tube with Intermediate Accessory



EXC-500 Laboratory Microscope

| SPECIFICATIONS | | |
|------------------------------|--|---|
| | EXC-500 Manual | EXC-500 Motorized |
| Optical System | NIS Infinity Optical System, f = 200mm | |
| Viewing Heads | Binocular or trinocular (0:100, 100:0, 80:20 split), 30° incline; Ergonomic (0°to 35° adjustment angle) binocular or trinocular (0:100, 100:0, 80:20 split); rotatable 360°; interpupillary distance adjustment 47-78mm | |
| Multi-viewing Options | Two head (front-to-back or side-by-side); Three head; Five head; Ten head | |
| Objectives | Plan Achromat 2x, 4x, 10x, 20x, 40x*, 50x* oil immersion, 60x*, 100x* oil immersion; Plan semi-Apo-chromatic 4x, 10x, 20x, 40x*, 100x* oil immersion; Plan Apochromatic 10x, 20x, 40x, 60x* oil immersion, 100x* oil immersion; Plan Phase 10x, 20x, 40x*, 100x* oil immersion (*spring loaded) | |
| Eyepieces | WF10x/22mm focusing eyepiece; WF10x/25mm focusing eyepiece; WF15x/16mm focusing eyepiece; WF20x/12.5mm focusing eyepiece; Ø30mm I.D. eyetubes | |
| Nosepiece | Reversed sextuple ball-bearing nosepiece with analyzer slot; accepts M25 threaded objectives; Nosepiece spacer (20mm or 40mm), lowers nosepiece and stage | Motorized reversed sextuple nosepiece with analyzer slot; accepts M25 threaded objectives |
| Focusing System | Coaxial focusing system with adjustable tension control and upper limit stop; all metal gears, brass fine focus gear | Motorized focus |
| Stand | Cast aluminum alloy | |
| Stages | Mechanical stage (X-Y travel 78mm x 54mm) with adjustable tension controls; <ul style="list-style-type: none"> • White Gorilla glass insert, right or left-handed X-Y controls • Black hard-coated, right or left-handed X-Y controls Plain Pathology stage (no X-Y controls) Motorized stage with right-handed, drive-by-wire X-Y stage controls; stage control box; dual slide holder | |
| Condenser | Swing-out Achromat condenser with iris diaphragm, N.A. 0.9/1.25 (2x-100x) Abbe condenser with iris diaphragm, N.A. 0.9 6-position phase contrast turret condenser, N.A. 1.25, BF & DF positions (10x, 20x 40x & 100x phase annuli) DIC condenser with iris diaphragm, swing out top lens, N.A. 0.9/1.25 (2X-100X); DIC prisms for 10X-100X | |
| Illumination | 3W LED Eco-illumination with variable intensity control, Light Intensity Memory (LIM), Color Temperature adjustment, 25,000+ hour bulb life | |
| Fluorescence | Optional: 6-position epi-fluorescence illumination attachment accepts a variety of solid-state light sources; 1-, 2- and 3-channel epi-fluorescence attachment with integrated LEDs | |
| Observation Method | Brightfield, Darkfield, Phase contrast, Polarization, Fluorescence, DIC | |
| Power | Input: 100-240V 0.5A | Input: 100-240V 1.5A |
| Weight (approx.) | 30lbs. (standard configuration with fixed binocular viewing head) | 36lbs. (standard configuration with fixed trinocular viewing head and motorized stage) |



MICROSCOPY & IMAGING SOLUTIONS

WWW.ACCU-SCOPE.COM

73 Mall Drive, Commack, NY 11725
631-864-1000

| | | | | |
|----------------|--|---|--|--|
| | | | | |
| WARNING | | READ THE CORRESPONDING MANUAL CAREFULLY TO ENSURE CORRECT USAGE OF ALL PRODUCTS | | |

Copyright © 2025 ACCU-SCOPE Inc. Printed in the U.S.A.
ACCU-SCOPE Inc. reserves the right to change and improve specifications without notice due to technological or manufacturing advances.

v072425